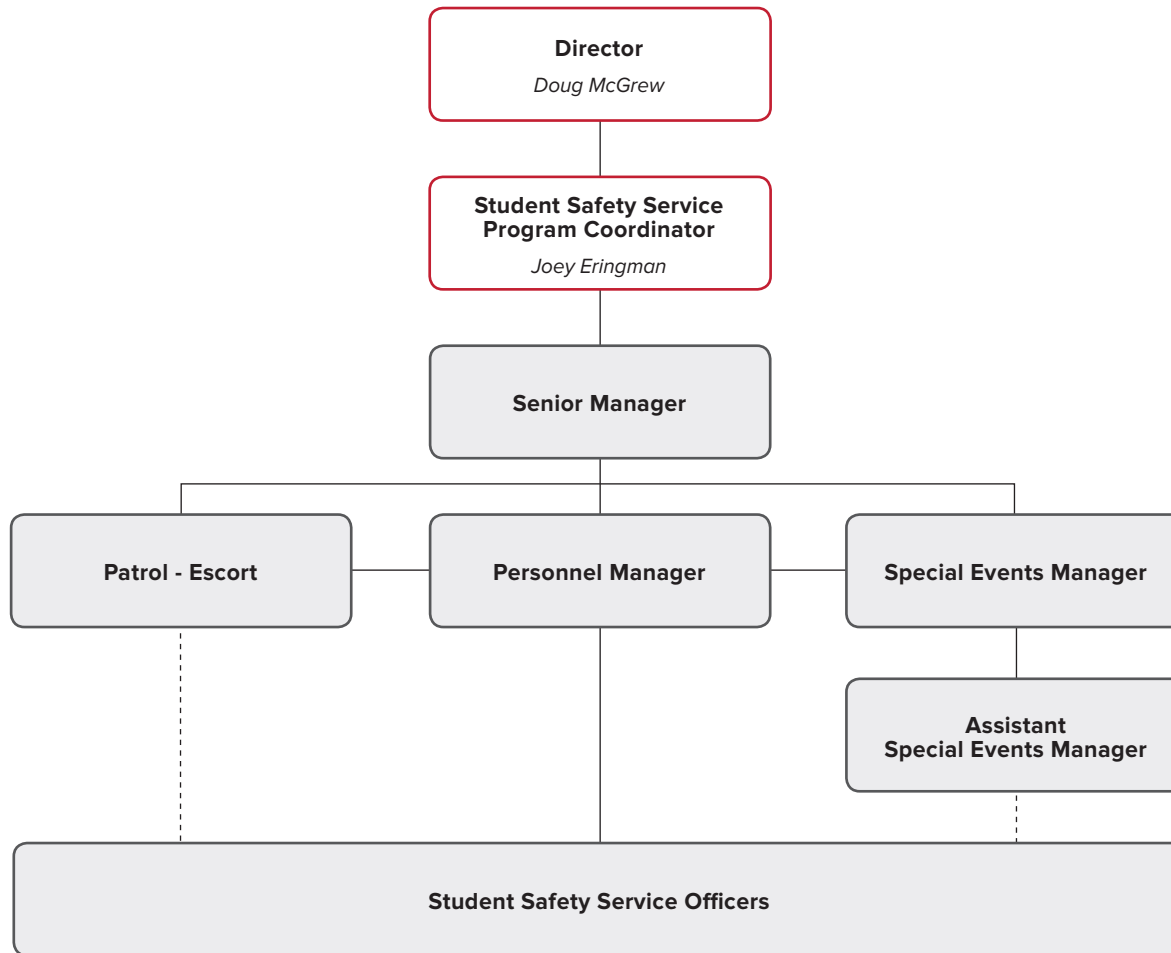


The Ohio State University Student Safety Service Organizational Chart



Student Safety Service Officers are responsible only for reporting to one supervisor at a given time. The Manager on Duty (MOD) for a shift is designated through the personnel schedule and clarifies who the SSS Officer is expected to report to. In the event that multiple managers are scheduled to work, SSS Officers are to defer to the designated MOD. In the event a manager with equal ranking is scheduled during the same shift as another manager, supervisory responsibilities rest with the designated MOD. If the circumstance arises that a MOD is not available, such as shifts falling outside of regularly scheduled work hours, SSS Officers report to the OSU Police Division Lieutenant on Duty. Conflicting orders are addressed under "Personnel," subsection "Manner of Issuing Orders." All personnel are expected to know and follow the chain-of-command.

